

Data Use Partnership Journey

Through the Data Use Partnership, PATH is supporting the government of Tanzania to improve their national health care system through the better use of health data. Over the last five years, DUP has achieved many milestones across four main health areas in response to Tanzania's Digital Health Investment Roadmap.

MAIN HEALTH AREAS

Coordinating the digital health ecosystem and investments



Building health worker capacity for the future



Strengthening digital governance and policy



Digitalizing primary healthcare



2017

JANUARY

Publication of Tanzania's
Digital Health Investment Roadmap



Launch of the Data Use Partnership



DATA USE PARTNERSHIP
THE JOURNEY TO BETTER DATA FOR
BETTER HEALTH IN TANZANIA

JUNE

2018

FEBRUARY

Establishment
of inaugural
**Governance
Unit**

AUGUST

Launch of the
**Capacity
Building
Consortium**



Release of the
Capacity Building
Consortium
**landscape
report** on
curricula and
eLearning
recommendations

DECEMBER

2019



Launch of the **National
Digital Health Strategy**
(2019-2023)

NOVEMBER

NOVEMBER

Launched the
**Health
Initiative
Digital Library**

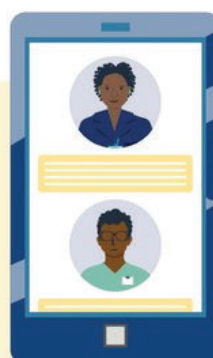
NOVEMBER

Appointment of the
**National Digital
Health Steering
Committee**



2020

Reviewed **District and
Regional Health
Profile** template



JUNE

SEPTEMBER

Reviewed **curricula for higher
diploma in clinical medicine** to
include digital and data



2021

JUNE

Launch of



Endorsement of
Tanzania's **Health
Enterprise
Architecture**

FEBRUARY



improved
**eLearning
platform**

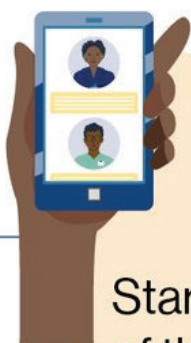


Launched
AfyaSS



NOVEMBER

2022



APRIL

Start development
of the **PHC digital
system for low-
resource settings**

Endorsement
of **PHC
Roadmap**

EXPECTED SEPTEMBER

Release of the
refreshed **Digital
Health Investment
Road Map**

EXPECTED DECEMBER

Launch of improved
**Human Resources
for Health**

EXPECTED SEPTEMBER

Information System



www.path.org/dup

www.moh.go.tz



DATA USE PARTNERSHIP

THE JOURNEY TO BETTER DATA FOR
BETTER HEALTH IN TANZANIA